

9 – 10 | E-shaped pallet dollies

- Handle pallets with ease
- E-shape – easy to fit out

Max. load: 1000 kg. Frame material: steel. Finish: powder coated. Frame colour: blue. Loading height: 150 mm. Length: 1200 mm. Width: 870 mm. Height: 150 mm. Wheel fittings: 5 castors. Wheel type: nylon. Wheel Ø: 80 mm. Fittings: angled frame. Application: for pallets / for pallet trucks.

9 | Ref. 527 648 6H € 265.00

10 | Minimum order quantity: 5.

Ref. 527 706 6H € 245.00



NEW

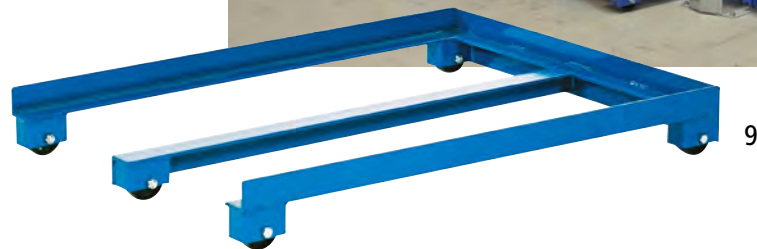
TRANSPORT

11 | Pallet dollies

- Handle pallets with ease
- More effective material flow
- Move heavy objects more easily

Max. load: 150 kg. Frame material: steel, electrolytically zinc plated. Finish: zinc plated by galvanization. Loading height: 185 mm. Length: 1220 mm. Width: 820 mm. Height: 185 mm. For container size: 1200 x 800 mm. Wheel fittings: 4 swivel castors 2 with wheel stops. Wheel type: solid rubber tyres. Wheel Ø: 125 mm. Application: for pallets / for containers.

11 | Ref. 456 921 6H € 115.00



9



11

From

€ 115.00

Ref. 456 921 6H



13

From

€ 175.00

Ref. 521 360 6H



More products online!



12

The corner braces prevent a pallet or mesh box from slipping off.

QUIPO
★★★

12 – 14 | Professional pallet dollies

- Ensure a more efficient material flow

Frame material: angled steel frame. Finish: powder coated. Frame colour: melon yellow RAL 1028. Length: 1245 mm. Width: 845 mm. For container size: 1200 x 800 mm. Wheel fittings: 2 swivel castors with 1 x stops, 2 fixed castors. Wheel Ø: 160 mm. Wheel bearing: roller bearing. Fittings: stacking corners/corner braces / angled frame. Application: for pallets / for containers.

	12	13	14
Max. load		350	750
Wheel type	solid rubber	solid rubber	fully-elastic
Loading height			
Minimum order quantity			
220 mm	1 pcs.		
	Ref. 521 360 6H		521 362 6H
	€ 175.00		219.00
220 mm	10 pcs.		
	Ref. 114 550 6H		114 551 6H
	€ 155.00		199.00
650 mm	1 pcs.		
	Ref. 968 347 6H		521 363 6H
	€ 255.00		329.00
650 mm	10 pcs.		
	Ref. 114 552 6H		114 554 6H
	€ 239.00		299.00