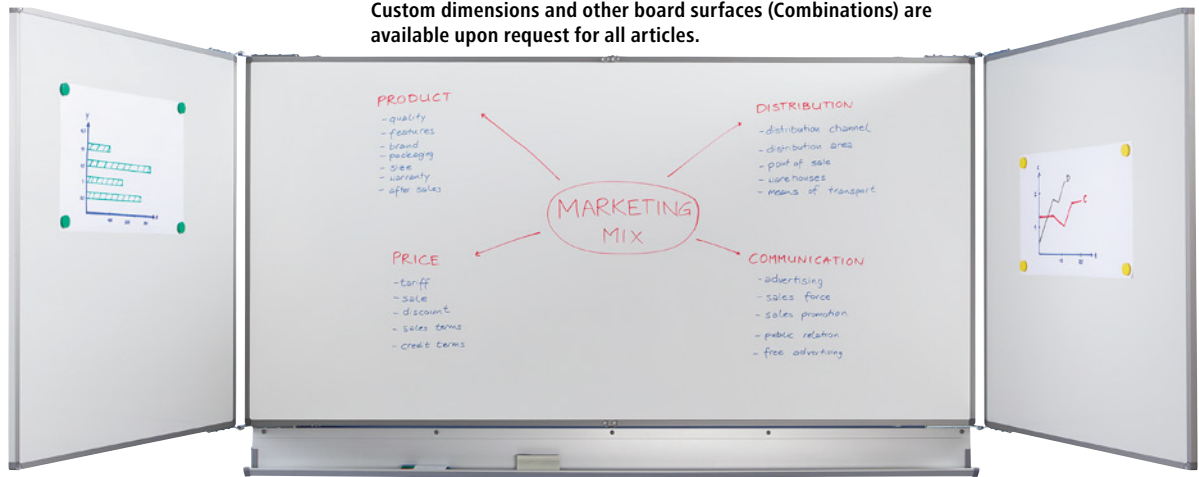


Custom dimensions and other board surfaces (Combinations) are available upon request for all articles.



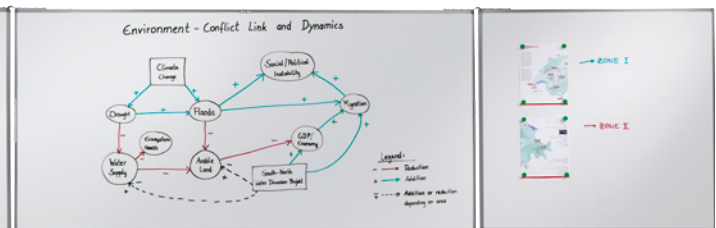
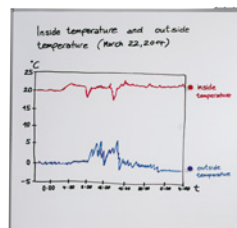
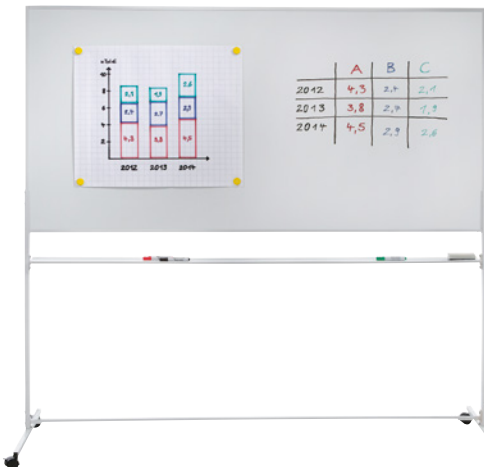
Very durable due to the stoving of the enamel layer at approx. 800 °C.

## Folding wall boards

- 5 sides that can be written on produce a large writing surface in a compact space
- For very intensive use, durable, e3 certified and 99% recyclable
- The board surfaces are magnetic, can be written on and dry wiped

Finish: steel, enamelled. Feature: folding. Fittings: storage tray. Depth: 110 mm. Frame thickness: 19 mm. Material of writing board: steel, enamelled. Colour of writing board: white.

Board width	mm	1200	1500	2000
Width	mm	2400	3000	4000
Width, closed	mm	1200	1500	2000
Height	mm	900	1000	1000
Ref.		►117 391 3H	►117 392 3H	►117 393 3H
£		509.00	585.00	689.00



Very durable due to the stoving of the enamel layer at approx. 800 °C.



## Mobile rotating boards

- Simply rotate the board 180° to reveal an additional blank surface
- For very intensive use, durable, e3 certified and 99% recyclable
- The e3 enamelled surface is resistant to scratches and resistant to bacteria and chemicals

Finish: steel, enamelled. Feature: can be written on both sides / mobile. Fittings: storage tray. Wheel fittings: 4 swivel castors with wheel stops. Board height: 1000 mm. Height: 1890 mm. Depth: 670 mm. Frame thickness: 20 mm. Material of writing board: steel, enamelled. Colour of writing board: white. Base colour: white. Base material: steel, powder coated.

Board width: 1500 mm. Width: 1500 mm. Weight: 22 kg.

►Ref. 117 386 3H £ 499.00

Board width: 2000 mm. Width: 2000 mm. Weight: 27.5 kg.

►Ref. 117 387 3H £ 559.00

## Mobile folding boards

- 5 sides to write on provide an enormous amount of space for every type of presentation and lecture
- For very intensive use, durable, e3 certified and 99% recyclable
- The board surfaces are magnetic, can be written on and dry wiped

Finish: steel, enamelled. Feature: folding / mobile. Fittings: storage tray. Wheel fittings: 4 swivel castors with wheel stops. Board height: 1000 mm. Height: 1890 mm. Depth: 670 mm. Frame thickness: 19 mm. Material of writing board: steel, enamelled. Colour of writing board: white. Base colour: white. Base material: steel, powder coated.

Board width: 1500 mm. Width: 3000 mm. Width, closed: 1500 mm. Weight: 36 kg.

►Ref. 117 388 3H £ 919.00

Board width: 2000 mm. Width: 4000 mm. Width, closed: 2000 mm. Weight: 46.4 kg.

►Ref. 117 389 3H £ 999.00

Free delivery to UK mainland  
for over 80,000 products.

UK  
Ireland

01442 238 000  
1 800 677 300

KAISER+KRAFT

OFFICE