



**Your advantage**  
Ideal for heavy and bulky goods.



## 2–3 | Heavy duty work tables

- Particularly sturdy worktables – static distributed load approx. 1500 kg
- Worktop optionally available with zinc plated steel lining as protection from oil, grease and wear
- Individual drawer can be retrofitted on every table

Depth: 700 mm. Frame design: 4 legs.  
Fittings: base construction. Static distributed load: 1500 kg. Frame material: sheet steel, powder coated. Frame colour: light grey RAL 7035. Working height: 850 mm.

### 1 | Single drawer

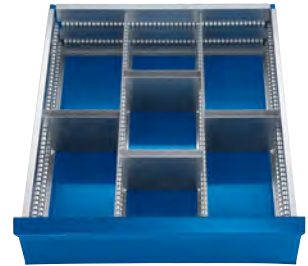
Height: 222 mm. Width: 590 mm.  
Depth: 600 mm. Internal height: 150 mm.  
Internal width: 490 mm. Internal depth: 500 mm. Max. load: 50 kg.  
Weight: 12 kg.

1 | **Ref. 175 917 6F £ 175.00**

### 4 | Drawer divider set

Material: sheet steel, galvanised. For height: 222 mm. For width: 590 mm. For depth: 600 mm. Number of longitudinal dividers: 2. Number of cross dividers: 4.

4 | **Ref. 175 920 6F £ 26.90**



4

	2	3
Type of worktop	multiplex worktop	sheet steel
Panel thickness	mm 50	2.5
<b>Width</b>		
1000 mm	Ref. 175 925 6F	175 923 6F
	£ 319.00	269.00
1500 mm	Ref. 175 930 6F	175 928 6F
	£ 389.00	339.00
2000 mm	Ref. 175 932 6F	175 918 6F
	£ 539.00	689.00