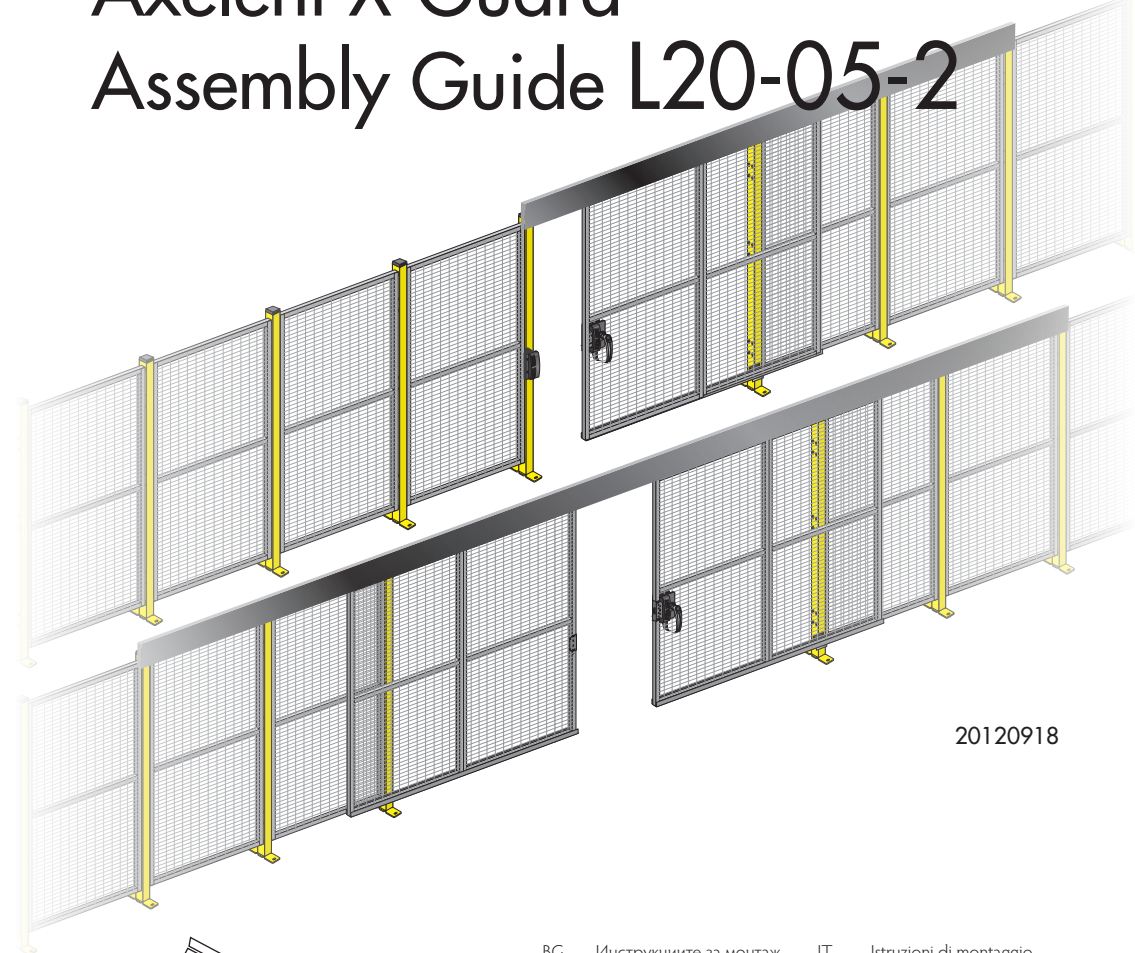
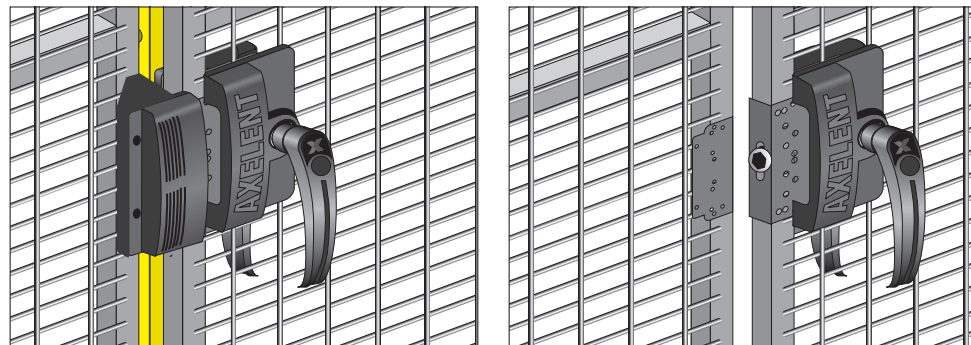
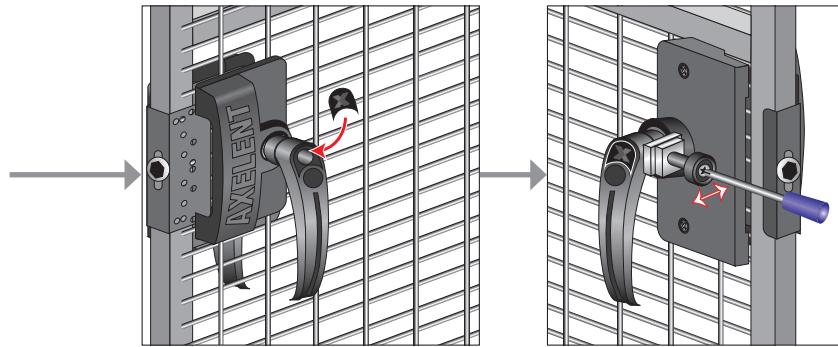
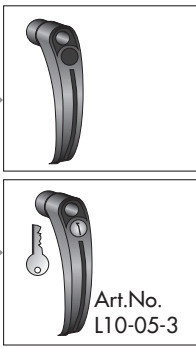
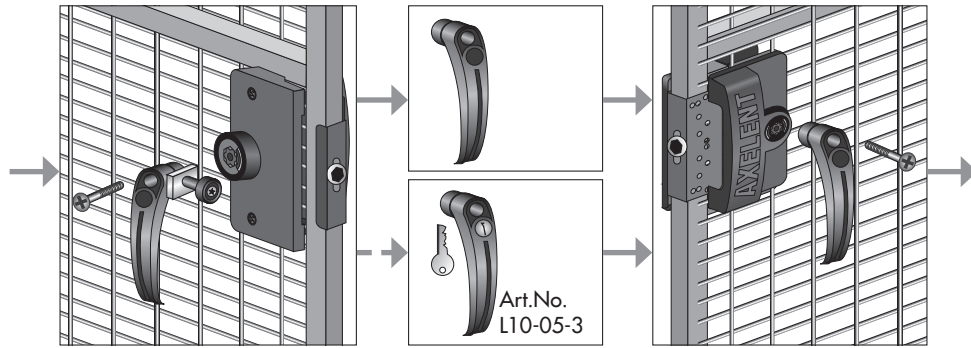




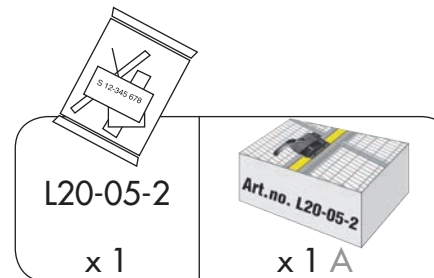
Axellent X-Guard Assembly Guide L20-05-2



20120918



Axellent AB
Box 1 · Kävsjövägen 17
SE-330 33 Hillerstorp
Axellent Direct. 0370-37 37 37
Fax. 0370-37 37 47
E-mail. sales@axellent.se
Internet. www.axellent.se



| | | | |
|----|-------------------------------|----|-----------------------------|
| BG | Инструкциите за монтаж | IT | Istruzioni di montaggio |
| CZ | Montážní návod | LT | Surinkimo instrukcija |
| DE | Montageanleitung | LV | Montāžas instrukcijas |
| DK | Monteringsvejledning | MT | Assemblaġġ istruzzjonijiet |
| EE | Paigaldusjuhised | NL | Montagehandleiding |
| ES | Instrucciones de montaje | PL | Instrukcja montażu |
| FI | Kokoamisohje | PT | Instruções de montagem |
| FR | Les instructions d'assemblage | RO | Instrucțiunile de asamblare |
| GB | Assembly instructions | SE | Monteringsanvisning |
| GR | οδηγίες συναρμολόγησης | SI | Sestavljanje navodila |
| HU | Összeszerelési utasítások | SK | Montážny návod |
| IE | Treoracha cóimeála | | |

